

Supplementary material to

## A novel kinetic cholinesterase-inhibition based method for quantification of biperiden in pharmaceutical preparations

Vladan R. Djurić<sup>1</sup>, Violeta D. Mitić<sup>2</sup>, Nebojša R. Delečić<sup>1</sup>, Marija D. Ilić<sup>3</sup>, Bratislav M. Ćirković<sup>1</sup> and Vesna P. Stankov-Jovanović<sup>2</sup>

<sup>1</sup>University of Priština – Kosovska Mitrovica, Faculty of Agriculture, Kopaonička bb, 38219 Lešak, Serbia

<sup>2</sup>University of Niš, Faculty of Science and Mathematics, Department of Chemistry, Višegradska 3, 18000 Niš, Serbia

<sup>3</sup>Veterinary Specialized Institute "Niš", Laboratory Sector, Laboratory for Analytical Chemistry, Dimitrija Tucovića 175, 18106 Niš, Serbia

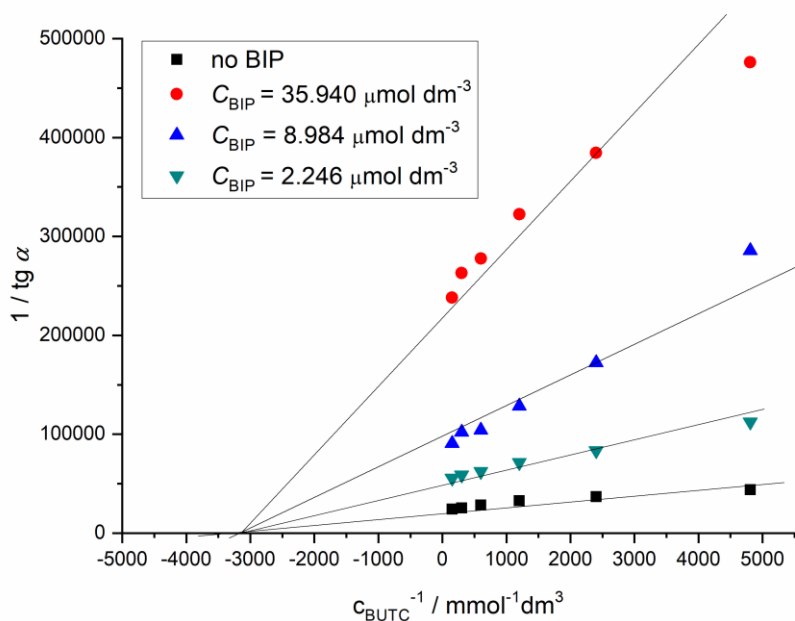


Figure D-1. Lineweaver-Burke diagram

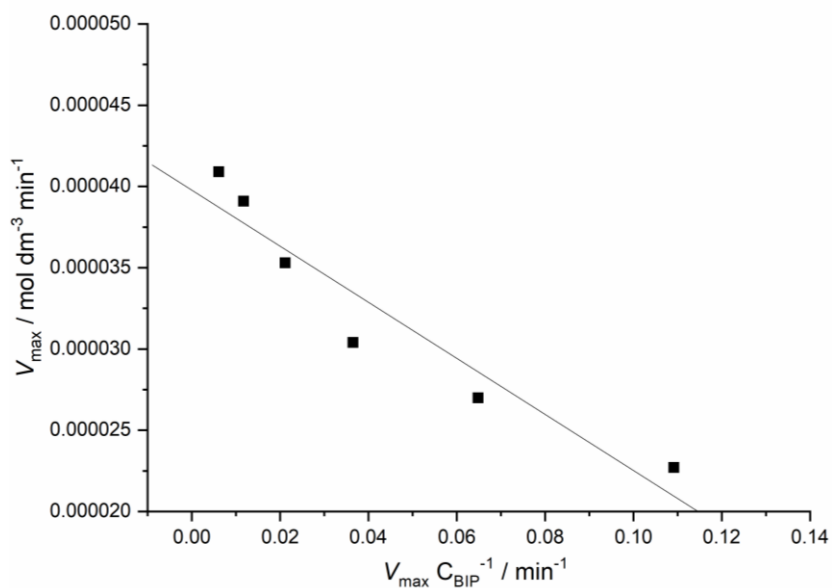


Figure D-2. Eadie-Hofstee diagram.  $K_M$  is equal to the slope of the line



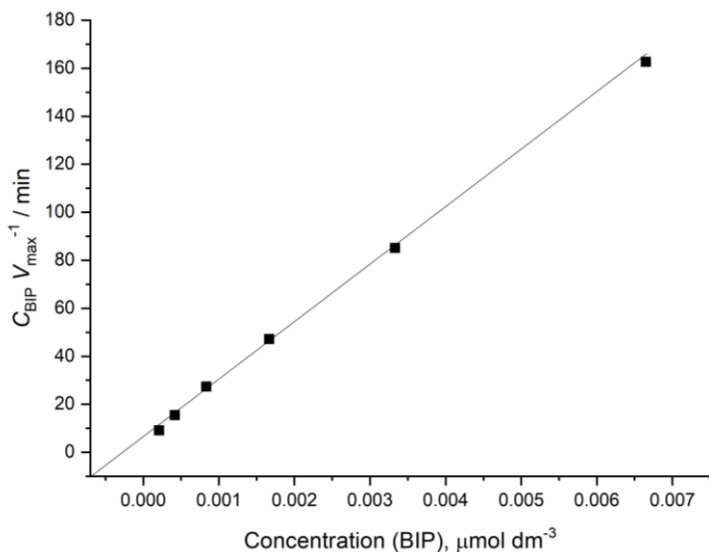


Figure D-3. Hanes diagram. Y intercept is equal to  $K_M/V_{\text{max}}$

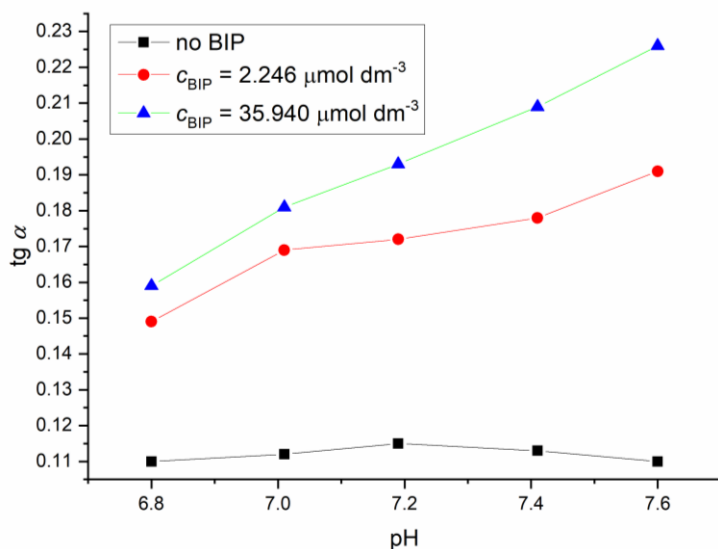


Figure D-4. Dependence of the reaction rate on pH with or without BIP

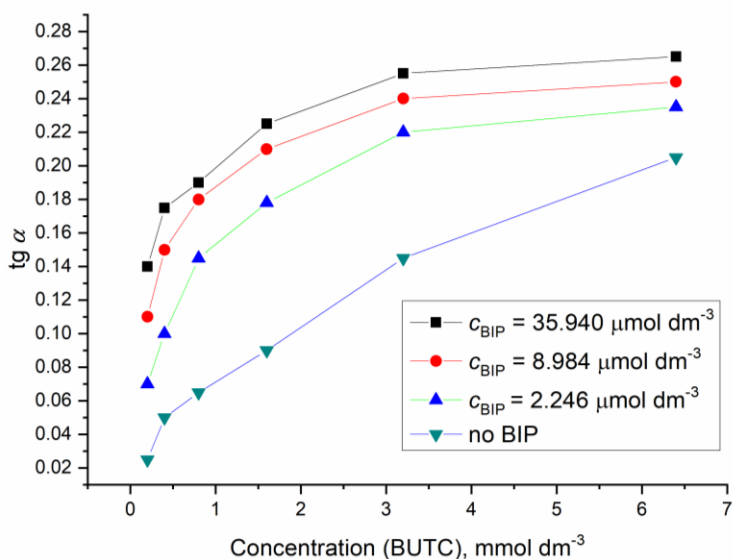


Figure D-5. Dependence of the reaction rate on  $C_{\text{BUTC}}$  with or without BIP

